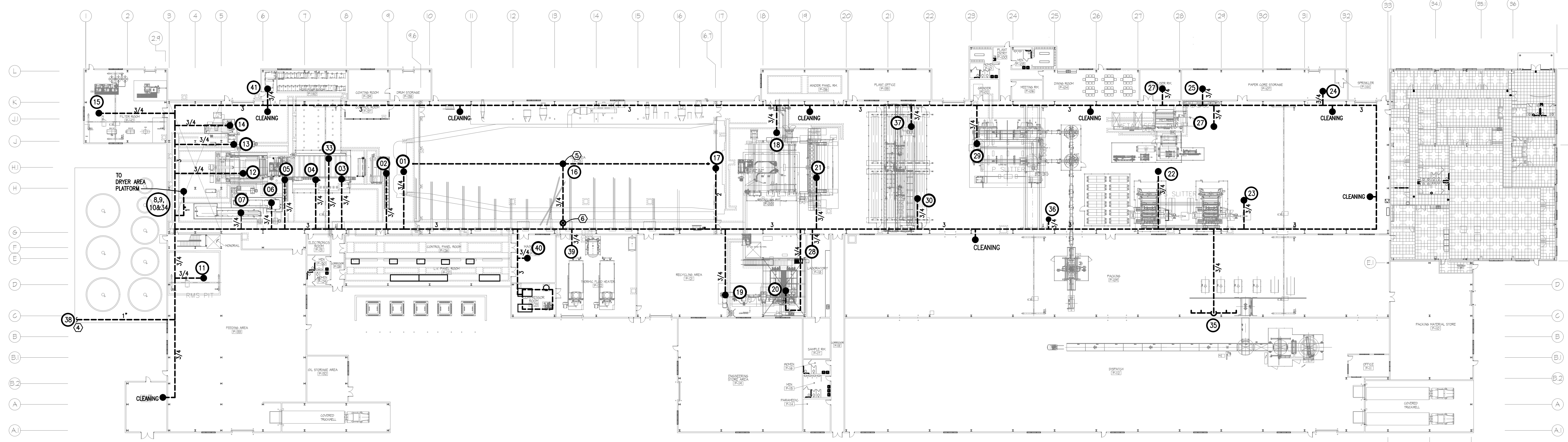


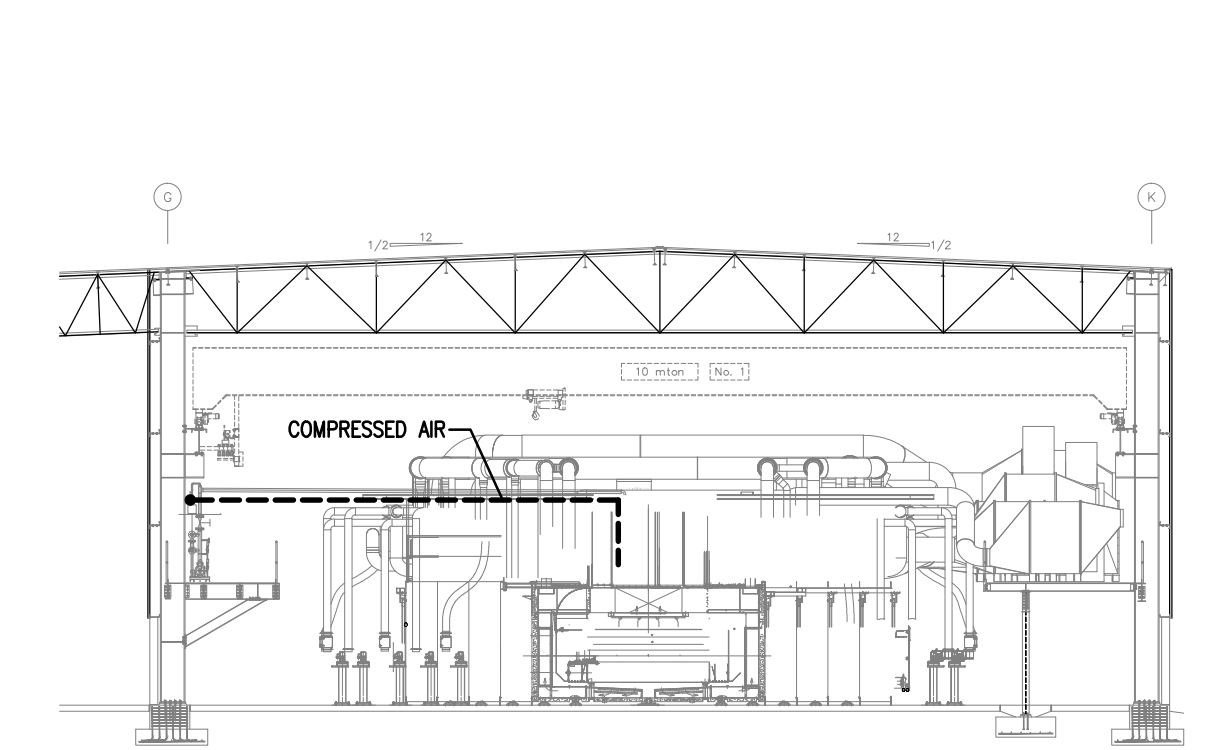
DRYER TOWER SECTION
 SCALE: 1/32" = 1'-0"

COMPRESSED AIR LAYOUT CONNECTION POINT SCHEDULE

S.NO.	AREA	FLOW RATE CFM@100psi
01	TDO INLET	5
02	AUX. WINDER-02	1
03	MDO OUTLET	10
04	MDO INLET	10
05	AUX. WINDER-01	1
06	SEC. EXTRUDER	5
07	MAIN EXTRUDER	5
08	DRYER AREA-10.0M	5
09	DRYER AREA-16.4M	5
10	DRYER AREA-21.9M	5
11	FEEDING AREA	5
12	CHILL ROLL	10
13	MELT PUMP	1
14	CO EXTRUDER	5
15	FILTER ROOM	5
16	TDO CENTER	3
17	TDO OUTLET	15
18	TUT	20
19	RECYCLING	3
20	FLUFF SILO	18
21	WINDER	12
22	SEC. SLITTER-1	16
23	SEC. SLITTER-2	4
24	PAPER CORE STORE	3
25	PAPER CORE STORE	3
26	-	-
27	METALLISER	20
28	LABORATORY	5
29	PRIMARY SLITTER	30
30	JUMBO STAND	3
31	-	-
32	-	-
33	CONVEYER	3
34	MAIN SILOS	3
35	PACKAGING	3
36	CONVEYER	3
37	JUMBO STAND	3
38	RAIL BUILDING	3
39	THERMAL HEATER ROOM	3
40	MAINTENANCE ROOM	3
41	MDO PUMP ROOM	3



COMPRESSED AIR LAYOUT
 SCALE: 1/32" = 1'-0"



TDO AREA SECTION 2-2
 SCALE: 1/16" = 1'-0"

GENERAL NOTES

1. THE OWNER HAS ASKED THE FOLLOWING TUBING SETS BE PROVIDED FOR CONNECTIONS TO EQUIPMENT. ALL WILL BE 3/4" FEET AND SIMILAR TO GRANGER PART NUMBER 4X48, 1/4" 30 REQUIRED, RORO, 3/8", 30 REQUIRED, AND RORO, 1/2", 25 REQUIRED. HOSES WILL BE HAWK BRASS NIPPLES ATTACHED AND BE SUPPLIED WITH A MALE QUICK CONNECT ON ONE END AND A FEMALE DISCONNECT ON THE OTHER END. MATERIAL WILL BE GENERAL-DUTY RUBBER RATED FOR 400 PSI.

SHEET NOTES:

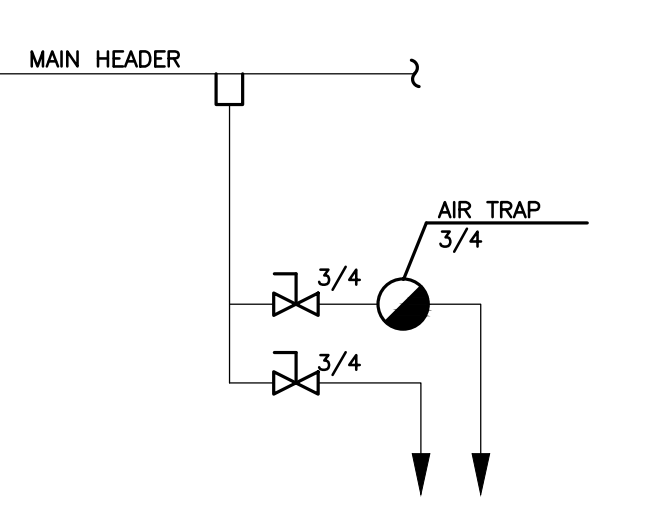
- PIPE TO FLOOR DRAIN
- PIE-FILTER, SEE SPECS
- FINAL FILTER, SEE SPECS
- ROUTE 1" COMPRESSED AIR LINE ALONG BRIDGE TO RAILROAD BUILDING, (BRIDGE IS APPROXIMATELY 170 FT LONG). SEE SHEET ME-001 FOR CONTINUATION.
- COMPRESSED AIR DROP SHALL BE CENTERED OVER THE MIDDLE OF TDO TOP
- PROVIDE VALVE ACCESSIBLE FROM MEZZANINE AT THIS LOCATION.
- FURNISH SHUT-OFF VALVE FOR PROCESS EQUIPMENT WITHIN 3 FEET OF EQUIPMENT CONNECTION. VALVE SHALL BE LOCATED IN A READILY ACCESSIBLE LOCATION. FURNISH VALVE WITH BLEED-OFF PORT. REFER TO SPECIFICATIONS FOR ADDITIONAL DETAILS.
- FINAL CONNECTION SHALL BE MADE BY OWNER
- PROVIDE THIS DROP WITH 2 FULL-SIZE BALL VALVES
- PROVIDE THIS DROP WITH 3 FULL-SIZE BALL VALVES

CONTROLS NOTE:

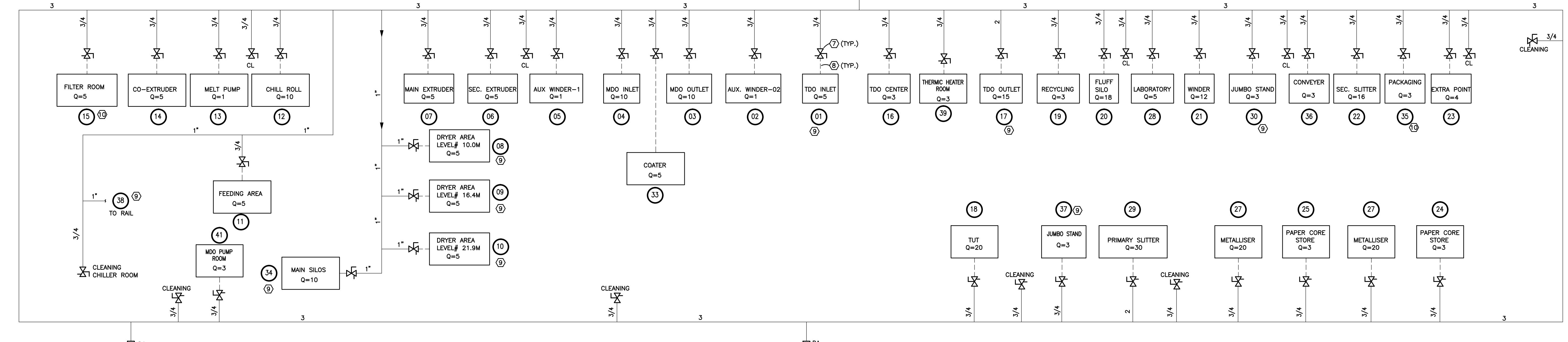
SOME CONTROLS ARE REQUIRED FROM AIR COMPRESSORS TO CONNECT THESE WITH PROCESS COMPUTER. CABLES FROM EACH EQUIPMENT FOR ANY INPUT/OUTPUT SIGNAL WILL GO TO CONTROL PANELS (01) WHICH WILL BE LOCATED IN CONTROL ROOM (0-100). DETAILS BELOW:
 1. 4-20 MA AMP SIGNAL OF PRESSURE (0-8 BAR) FROM COMPRESSOR MAIN HEADER IS REQUIRED TO READ THE AIR PRESSURE ON PROCESS COMPUTER.

SYMBOL LEGEND PIPE DIAGRAM

	BALL VALVE
	BALL VALVE W/ BLEED OFF PORT
	NON RETURN VALVE
	AIR TRAP
	FILTER
	AIR COMPRESSOR
	AIR DRYER
	FLOW RATE (cu/ft/hr)
	DRAIN TRAP ASSEMBLY
	PRESSURE INDICATOR
	PRESSURE SWITCH
	SAFETY VALVE
	FILTER REGULATOR LUBRICATION



TYP DETAIL OF AUTO DRAIN TRAP ASSEMBLY
 SCALE: N. T. S.



PIPE DIAGRAM
 SCALE: N. T. S.

